



INDOFINE Chemical Company, Inc.

121 Stryker Lane, Bldg. 30, Suite 1 • Hillsborough, NJ 08844 • U.S.A.

Phone: (908) 359-6778 • FAX: (908) 359-1179

website: www.indofinechemical.com

e-mail: chemical@indofinechemical.com

CERTIFICATE OF ANALYSIS

Catalog Number: 06-1389

Product Name: **4-HYDROXY-4'-METHOXYTOLAN**
(4-((4'-Methoxyphenyl)ethynyl)phenol)

CAS Number: [18938-18-6]

Lot Number: 1611919

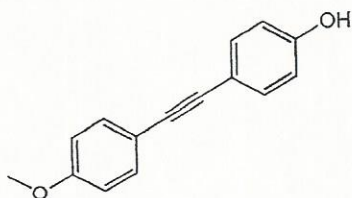
Chemical Formula: C₁₅H₁₂O₂

Molecular Weight: 224.25

Appearance: Yellowish powder

Storage: Store in a cool, dry place

Assay: 95.23%





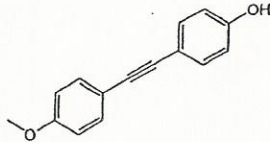
INDOFINE Chemical Company, Inc.

121 Stryker Lane, Bldg. 30, Suite 1 • Hillsborough, NJ 08844 • U.S.A.

Phone: (908) 359-6778 • FAX: (908) 359-1179

website: www.indofinechemical.com

e-mail: chemical@indofinechemical.com

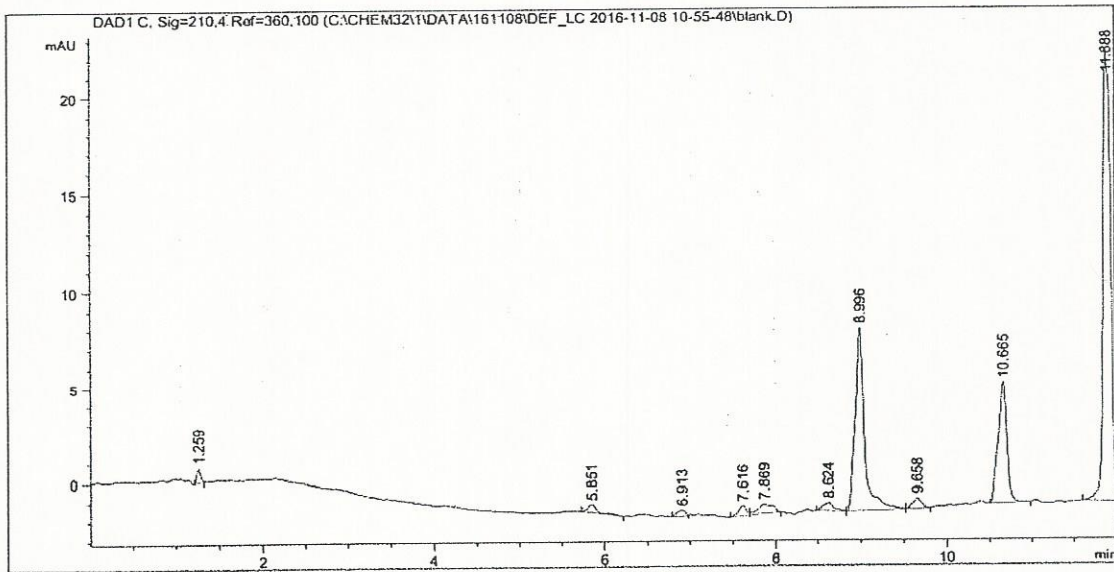


Catalog No.: 06-1389
Product Name: 4-Hydroxy-4'-methoxytolan
Lot No.: 1611919

```

=====
Acq. Instrument : 1260                      Seq. Line : 2
Injection Date  : 11/8/2016 11:12:30 AM    Location  : 1
                                           Inj      : 1
                                           Inj Volume: 1.000 µl
Acq. Method    : C:\Chem32\1\Data\161108\DEF_LC 2016-11-08 10-55-48\10-90-10MIN.M
Last changed   : 11/8/2016 10:55:48 AM by
Analysis Method: C:\Chem32\1\Data\161108\DEF_LC 2016-11-08 10-55-48\10-90-10MIN.M (Sequence
Method)
Last changed   : 11/8/2016 1:17:44 PM by
                (modified after loading)
Sample Info    : blank
=====

```



Area Percent Report

```

Sorted By      : Signal
Multiplier    : 1.0000
Dilution      : 1.0000
Use Multiplier & Dilution Factor with ISTDs

```

Signal 1: DAD1 C, Sig=210,4 Ref=360,100

Peak #	RetTime [min]	Type	Width [min]	Area [mAU*s]	Height [mAU]	Area %
1	1.259	BB	0.0412	2.14888	7.55134e-1	0.7514
2	5.851	BB	0.1167	3.57533	4.40691e-1	1.2501
3	6.913	BV	0.0847	2.17301	3.30516e-1	0.7598
4	7.616	BV	0.0922	3.51480	5.67855e-1	1.2289
5	7.869	VB	0.1538	6.22760	5.12468e-1	2.1775



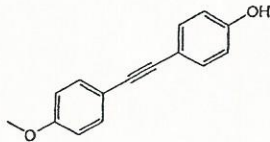
INDOFINE Chemical Company, Inc.

121 Stryker Lane, Bldg. 30, Suite 1 • Hillsborough, NJ 08844 • U.S.A.

Phone: (908) 359-6778 • FAX: (908) 359-1179

website: www.indofinechemical.com

e-mail: chemical@indofinechemical.com



Catalog No.: 06-1389
Product Name: 4-Hydroxy-4'-methoxytolan
Lot No.: 1611919

Data File C:\CHEM32\1\DATA\161108\DEF_LC 2016-11-08 10-55-48\blank.D
Sample Name: blank

Peak #	RetTime [min]	Type	Width [min]	Area [mAU*s]	Height [mAU]	Area %
6	8.624	BB	0.1184	3.84571	4.21811e-1	1.3446
7	8.996	BV	0.1078	71.87801	9.55387	25.1320
8	9.658	VB	0.0998	3.72719	5.18973e-1	1.3032
9	10.665	BB	0.1052	45.20768	6.33937	15.8068
10	11.888	BBA	0.0841	143.70364	23.26464	50.2457

Totals : 286.00185 42.70533

=====
*** End of Report ***



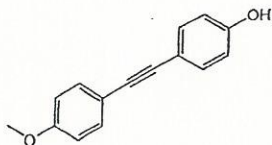
INDOFINE Chemical Company, Inc.

121 Stryker Lane, Bldg. 30, Suite 1 • Hillsborough, NJ 08844 • U.S.A.

Phone: (908) 359-6778 • FAX: (908) 359-1179

website: www.indofinechemical.com

e-mail: chemical@indofinechemical.com

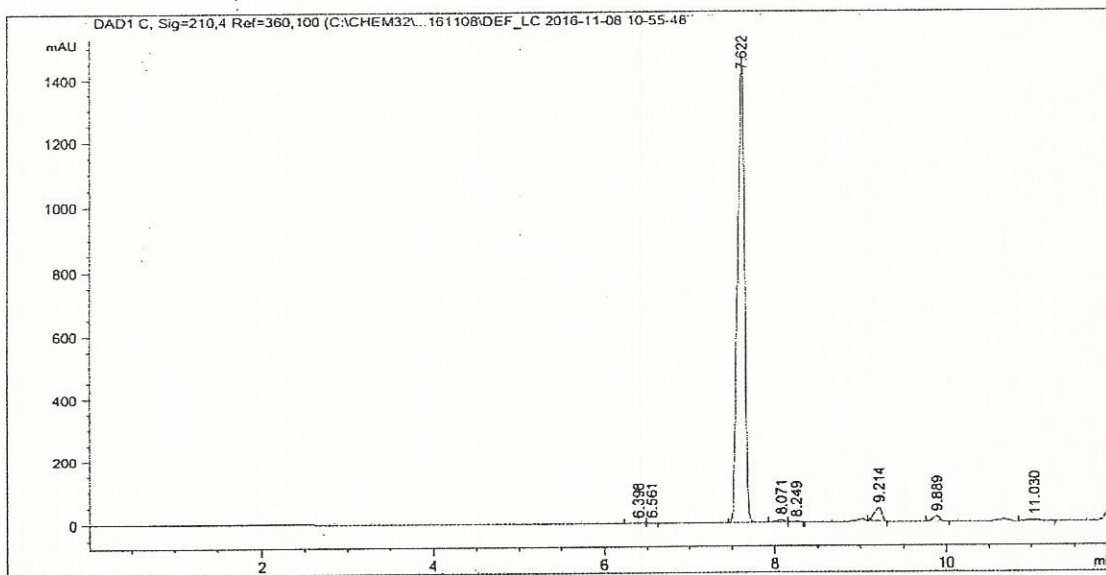


Catalog No.: 06-1389
Product Name: 4-Hydroxy-4'-methoxytolan
Lot No.: 1611919

```

=====
Acq. Instrument : 1260                               Seq. Line : 8
Injection Date  : 11/8/2016 12:45:04 PM             Location  : 7
                                                    Inj       : 1
                                                    Inj Volume: 1.000 µl
Different Inj Volume from Sample Entry! Actual Inj Volume : 0.500 µl
Acq. Method    : C:\Chem32\1\Data\161108\DEF_LC 2016-11-08 10-55-48\10-90-10MIN.M
Last changed   : 11/8/2016 10:55:48 AM by
Analysis Method: C:\Chem32\1\Data\161108\DEF_LC 2016-11-08 10-55-48\10-90-10MIN.M (Sequence
Method)
Last changed   : 11/8/2016 1:17:08 PM by
                (modified after loading)
=====

```



Area Percent Report

```

=====
Sorted By      : Signal
Multiplier    : 1.0000
Dilution      : 1.0000
Use Multiplier & Dilution Factor with ISTDs
=====

```

Signal 1: DAD1 C, Sig=210,4 Ref=360,100

Peak #	RetTime [min]	Type	Width [min]	Area [mAU*s]	Height [mAU]	Area %
1	6.398	BB	0.0878	8.36246	1.28636	0.0957
2	6.561	BBA	0.0608	1.28765	3.08112e-1	0.0147
3	7.622	BV R	0.0843	8320.60059	1464.01660	95.2316
4	8.071	VV E	0.0855	45.57182	7.88204	0.5216



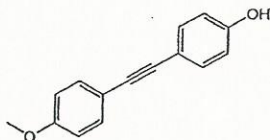
INDOFINE Chemical Company, Inc.

121 Stryker Lane, Bldg. 30, Suite 1 • Hillsborough, NJ 08844 • U.S.A.

Phone: (908) 359-6778 • FAX: (908) 359-1179

website: www.indofinechemical.com

e-mail: chemical@indofinechemical.com



Catalog No.: 06-1389
Product Name: 4-Hydroxy-4'-methoxytolan
Lot No.: 1611919

Data File C:\CHEM32\1\DATA\161108\DEF_LC 2016-11-08 10-55-48

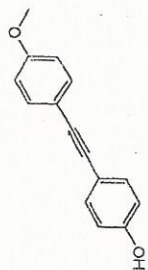
Peak #	RetTime [min]	Type	Width [min]	Area [mAU*s]	Height [mAU]	Area %
5	8.249	VBAE	0.0817	8.21303	1.41473	0.0940
6	9.214	BB	0.0828	236.21312	41.24483	2.7035
7	9.889	BV	0.0780	87.47971	16.45103	1.0012
8	11.030	BB	0.1086	29.50220	3.97637	0.3377

Totals : 8737.23058 1536.58008

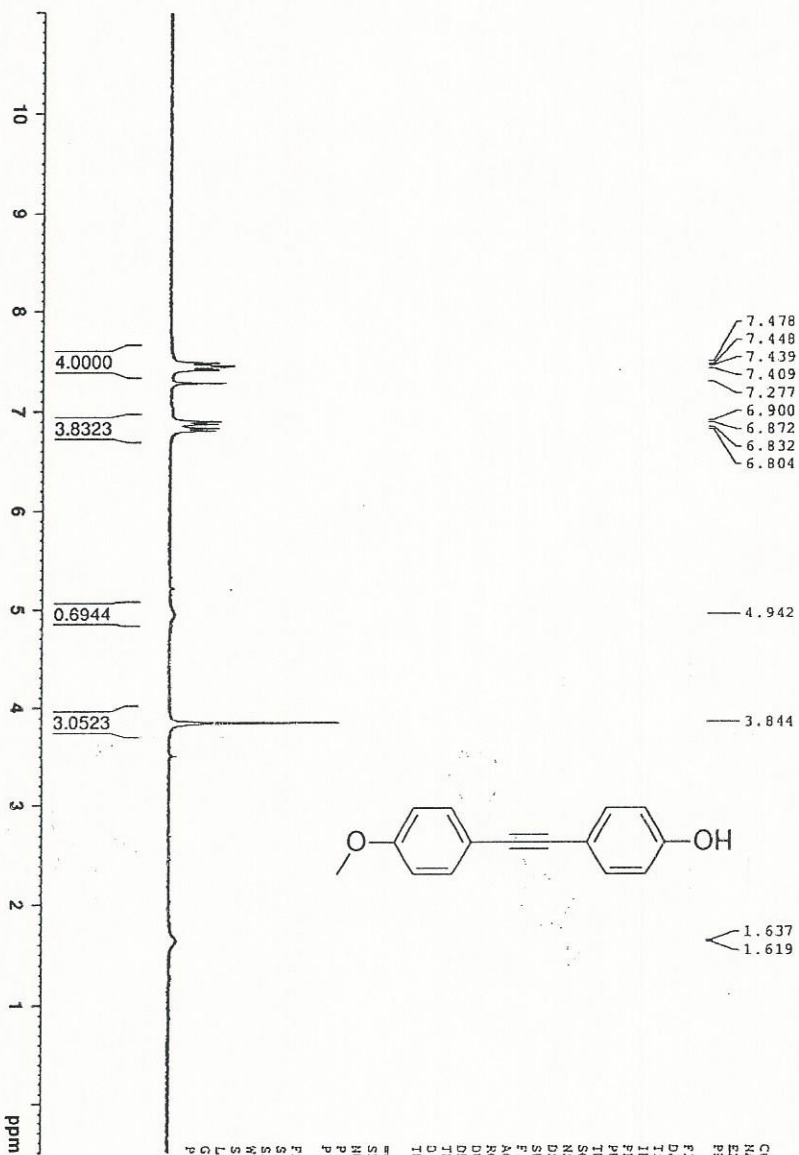
=====
*** End of Report ***



INDOFINE Chemical Company, Inc.
 121 STRYKER LANE
 BLDG. 30, SUITE 1
 HILLSBOROUGH, NJ 08844



Catalog No.: 06-1389
 Product Name: 4-Hydroxy-4'-methoxytolian
 Lot No.: 1611919



7.478
 7.448
 7.439
 7.409
 7.277
 6.900
 6.872
 6.832
 6.804

4.942

3.844

1.637
 1.619

Current Data Parameters
 NAME 016154
 EXPNO 11
 PROCNO 11

F2 - Acquisition Parameters

Date_ 20161108
 Time 13:20
 INSTRUM FOUERIER300
 PROBD 5 mm DUL 13C-1
 PULPROG zg30
 TD 65536
 SOLVENT CDCl3
 NS 11
 DS 2
 SFR 6103.519 Hz
 FIDRES 0.003131 Hz
 AQ 5.3687051 sec
 RG 217.367
 DW 81.920 usec
 DE 6.50 usec
 TE 290.8 K
 D1 1.00000000 sec
 TDO 1

CHANNEL f1
 SFO1 300.1818537 MHz
 NUCl 1H
 P1 12.40 usec
 PLW1 10.00000000 W

F2 - Processing parameters
 SI 4096
 SF 300.180000 MHz
 MDW EM
 SSB 0
 LB 0.30 Hz
 GB 0
 PC 1.00